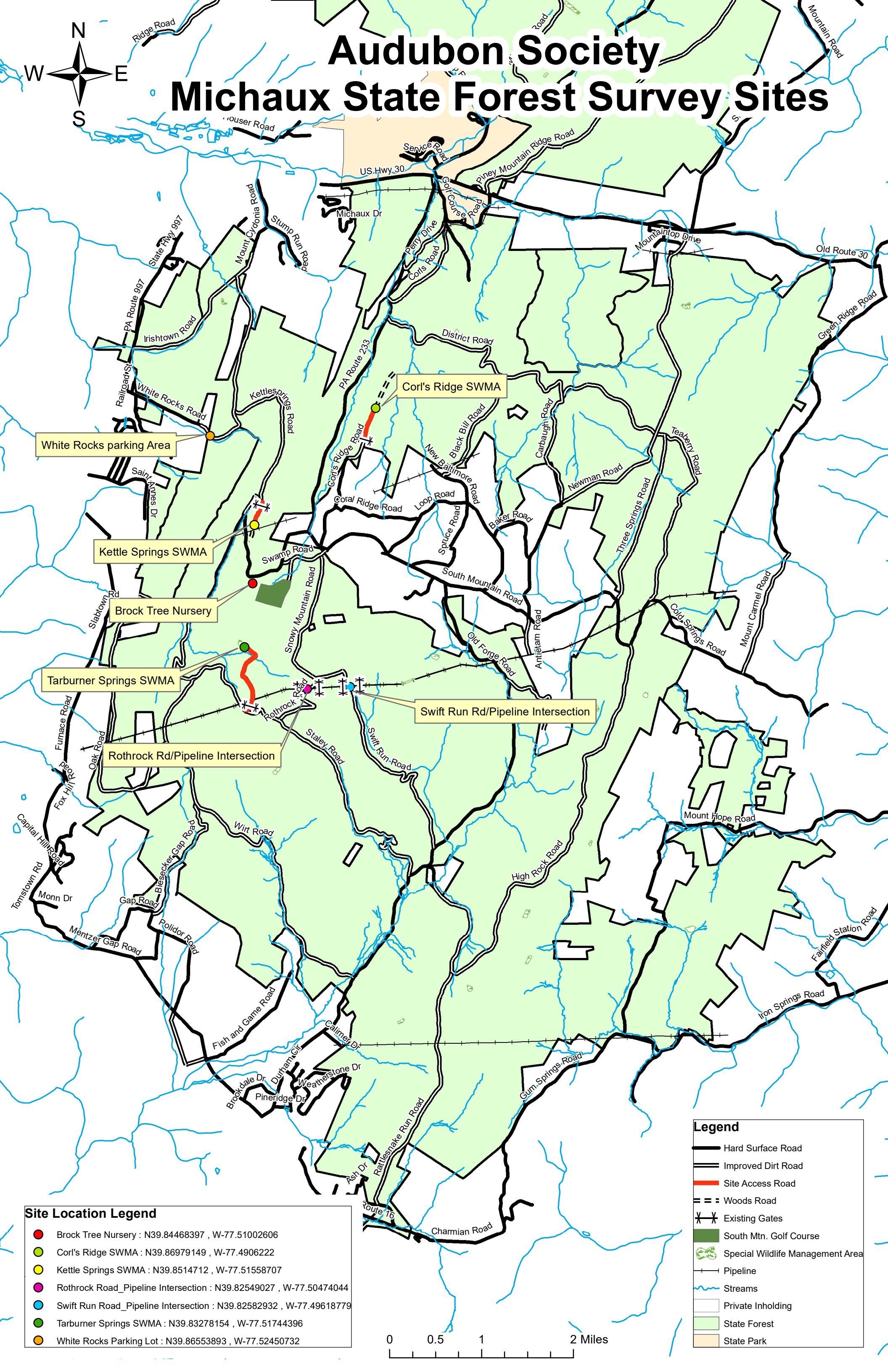


# Audubon Society Michaux State Forest Survey Sites



**Site Location Legend**

<span style="color: red;">●</span>	Brock Tree Nursery : N39.84468397 , W-77.51002606
<span style="color: yellow;">●</span>	Corl's Ridge SWMA : N39.86979149 , W-77.4906222
<span style="color: orange;">●</span>	Kettle Springs SWMA : N39.8514712 , W-77.51558707
<span style="color: magenta;">●</span>	Rothrock Road_Pipeline Intersection : N39.82549027 , W-77.50474044
<span style="color: cyan;">●</span>	Swift Run Road_Pipeline Intersection : N39.82582932 , W-77.49618779
<span style="color: green;">●</span>	Tarburner Springs SWMA : N39.83278154 , W-77.51744396
<span style="color: orange;">●</span>	White Rocks Parking Lot : N39.86553893 , W-77.52450732

**Legend**

	Hard Surface Road
	Improved Dirt Road
	Site Access Road
	Woods Road
	Existing Gates
	South Mtn. Golf Course
	Special Wildlife Management Area
	Pipeline
	Streams
	Private Inholding
	State Forest
	State Park

